

# MEASURES FOR THE PROMOTION OF GENDER EQUITY



## MES ASMABI COLLEGE P.VEMBALLUR

Govt.Aided, UGC Recognised & Affiliated to University of Calicut  
P.Vemballur, PO. Kodungallur, Thrissur Dt, Kerala 680 671

### SPECIFIC FACILITIES PROVIDED FOR WOMEN IN THE CAMPUS

The imperative to safeguard and enhance the safety and security of women on our college campus is intricately woven into the fabric of our institution's overarching security policies. Guided by a commitment to fostering an environment that promotes holistic well-being, inclusivity, and educational excellence, our college's security policies are designed to be robust and comprehensive. By aligning with the principles of our security policies, our commitment to women's safety extends beyond rhetoric, manifesting as a tangible and proactive stance that seeks to create a campus atmosphere where women can confidently pursue their academic endeavors, engage in extracurricular activities, and thrive in all aspects of their college experience.

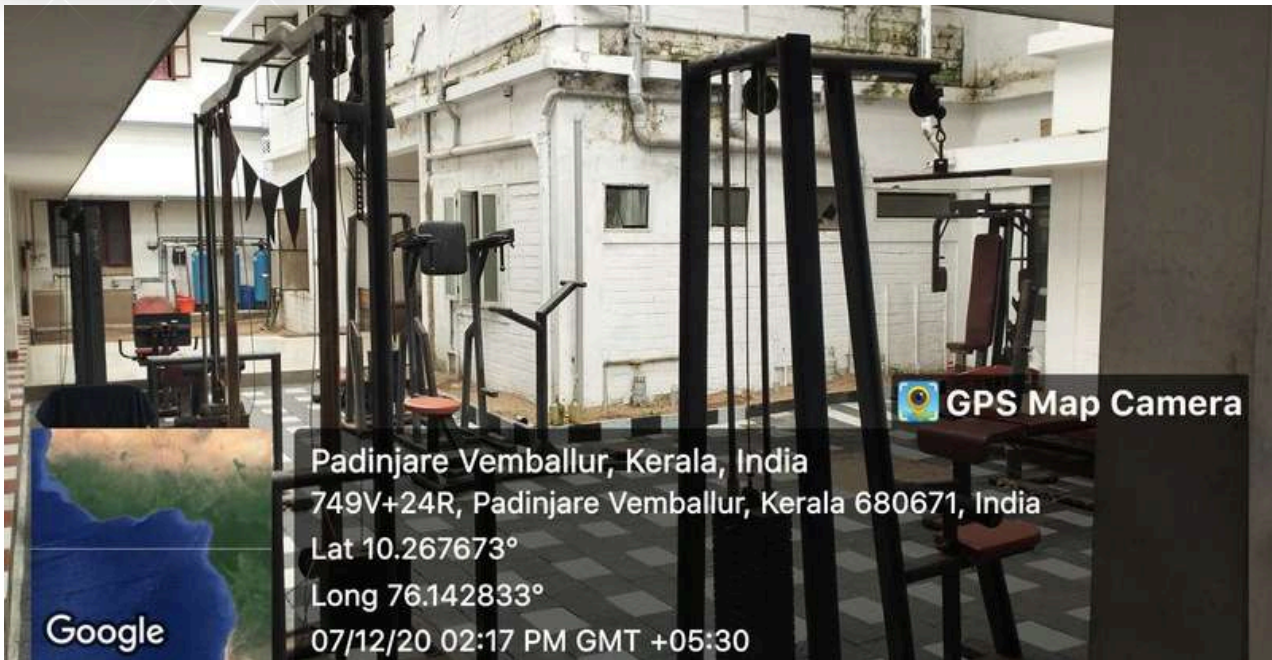


## HOSTEL



A well-appointed residence operates within our college premises, dedicated to ensuring the safety and security of our students. An entry/exit registry is meticulously maintained within the college residence to oversee student mobility. The institution further fortifies security through the deployment of security personnel, the issuance of identification cards, uniforms, and the implementation of closed-circuit television surveillance. Accommodations in the residence are provided for students hailing from Lakshadweep and international locales. The feedback received from these students serves as a testament to the institutional measures aimed at upholding gender equity. Over the years, there has been a notable increase in the occupancy rate of our student residence.

SEPERATE  
GYM AT THE  
LADIES  
HOSTEL

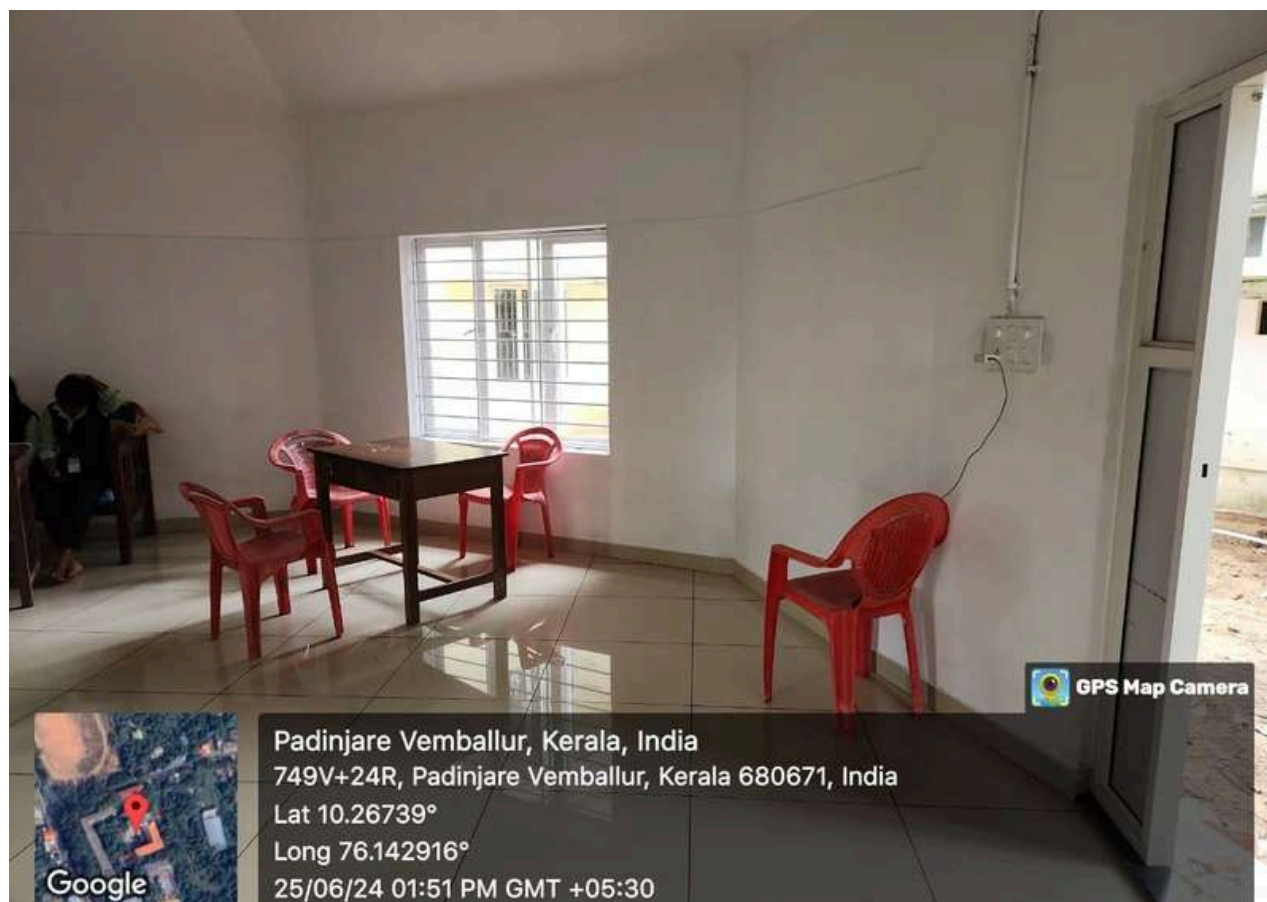


By offering an exclusive gym space, colleges aim to cultivate a culture of fitness and health. The provision of a hostel gym underscores the institution's commitment to nurturing individuals who are not only intellectually adept but also equipped with the vitality to face the challenges of academia and beyond.

## RETIRING ROOM



A communal space is designated for young women to seek solace and rejuvenation in times of physical or emotional strain. The institution offers well-appointed restroom facilities exclusively for female students, complete with amenities such as a pad vending machine and an incinerator, all available on campus.



# PRAYER HALL



Within our institution, there exists a sanctuary dedicated to prayer, accessible to both students and faculty. This space serves as a refuge for mental well-being and allows students to observe the specific rituals of their faith

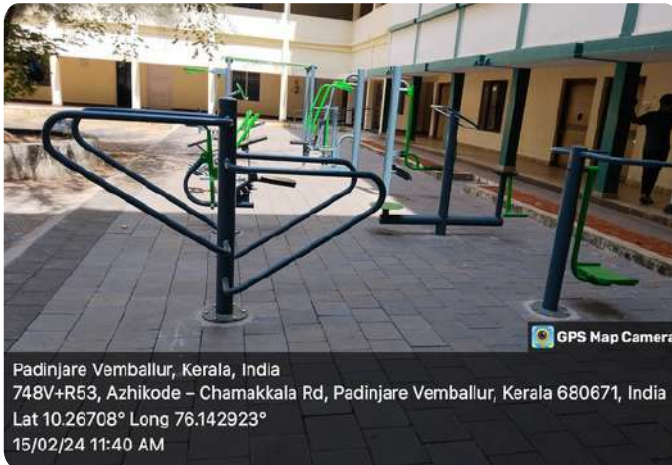


# DAY CARE CENTER



The childcare facility within the college diligently cares for the children of female educators during the college's operational hours

# HEALTH CLUB



Our wellness society routinely organizes health check-ups, fitness sessions, yoga classes, and badminton tournaments, all aimed at promoting physical and mental well-being. The college also conducts workshops on life skills, achieving work-life balance, and cultivating entrepreneurial skills, all in the pursuit of empowering women.

## NCC WING FOR LADIES



The NCC (National Cadet Corps) wing for ladies in college serves the purpose of instilling discipline, leadership, and patriotism among female students. It offers training in various aspects of military and community service, fostering qualities that contribute to their personal development and prepare them for future civic responsibilities with a sense of duty and pride.

