



**MES ASMABI COLLEGE P.VEMBALLUR**

**7.1.2**

## **Geotagged Photographs**

**Alternative Sources of Energy, Energy Conservation Measures,  
Green Campus, Waste Management  
and Barrier-Free Disable Friendly Facilities**

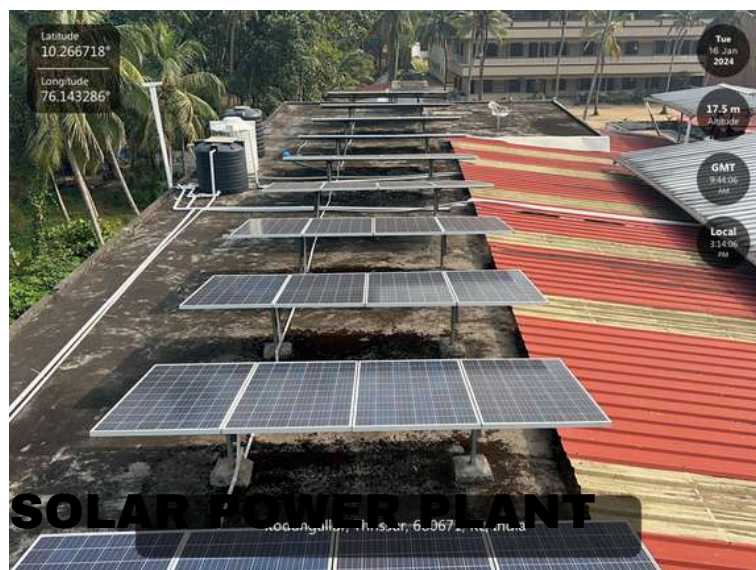
# ALTERNATIVE SOURCES OF ENERGY, ENERGY CONSERVATION MEASURES

## ALTERNATIVE SOURCES OF ENERGY - SOLAR POWER PLANT

Our institution is committed to its zeal for the environment. The institution has facilities and initiatives for alternative sources of energy and energy conservation measures. A solar power plant is operational in the institution. Seminars and awareness classes on energy conservation are organised by various Departments of the college.



**20 KW SOLAR POWER PLANT INSTALLED IN THE CAMPUS WHICH PROVIDES CLEAN, RENEWABLE , ENVIRONMENT FRIENDLY SOLAR ENERGY**



**SOLAR PANELS ON THE ROOFTOP OF COLLEGE BUILDING**

## WHEELING TO THE GRID



Electricity is transported from its point of contact to broader transmission grid which helps in overall energy efficiency and management.

## BIOGAS PLANT

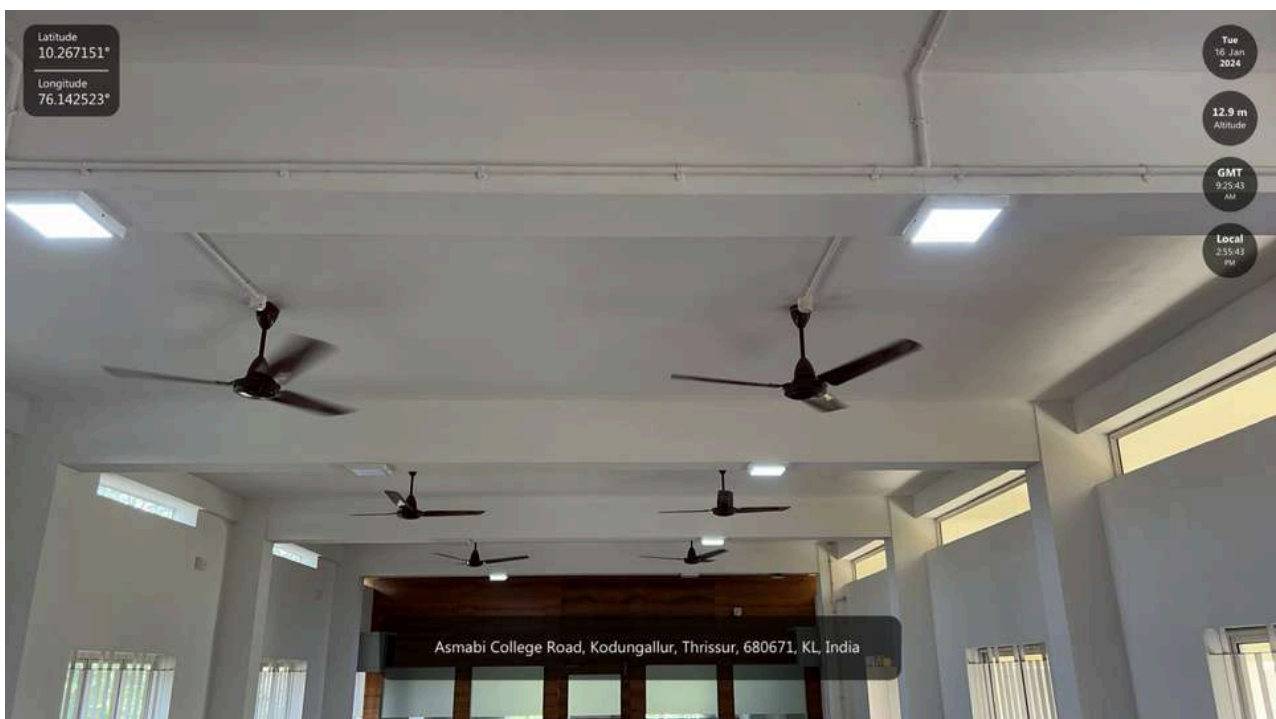
A biogas plant is functional in the college hostel and turns the kitchen waste into sustainable energy. It offers a sustainable solution for managing organic waste while simultaneously producing renewable energy.



Biogas Plant in the College Hostel

# ENERGY EFFICIENT SMART LED LIGHTS AND FANS

Our institution is committed in its zeal towards environment. LED lights and energy efficient smart fans, Brushless Direct Current (BLDC) have been installed in classrooms and different parts of the college. Electronic equipments are purchased taking into account the star rating of these equipments.



LED lamps and BLDC fans at New Computer Lab

## SENSOR BASED WATER PUMP AND PURIFIER



Sensor based water pumping facility of the institution optimises water usage and minimises waste

# MANAGEMENT OF VARIOUS TYPES OF DEGRADABLE AND NON-DEGRADABLE WASTE

The waste segregation process of our institution starts from the classroom. Separate bins for plastic and paper waste are placed in the classrooms which are further taken to a central waste collection unit.



Separate bins for plastic and paper waste in the class room



Eco-friendly waste bins made by the students

Central Waste Collection Unit- Separate bins for collection of paper Waste, E Waste and plastic Waste



e- Waste collection Bin



Paper Waste collection Bins



Plastic- Waste collection Bin

## DISPOSAL OF CHEMICAL WASTE

The chemical waste generated in laboratories is neutralized, diluted, and disposed of by the procedures outlined in the chemical disposal manual, directing it to specific pits designated for such disposal.



Chemical waste disposal facility near chemistry laboratory ensuring no contamination

## VERMICOMPOSTING UNIT

A vermicomposting unit is designed to recycle organic waste using earthworms, transforming it into nutrient-rich compost. This process helps reduce the volume of biodegradable waste produced in the campus sent to landfills, contributing to overall waste reduction. The resulting vermicompost serves as an excellent soil conditioner, enhancing soil fertility, structure, and water retention. Vermicomposting units are sustainable, eco-friendly solutions that promote natural decomposition processes and minimize the need for chemical fertilizers. They are also valuable educational tools, teaching students and communities about the importance of recycling organic materials and the environmental benefits of vermicomposting.



Vermi composting unit in the college campus



THE FIRST HARVEST AND SALE OF VERMICOMPOST FROM THE RENOVATED VERMICOMPOST UNIT



# **WATER CONSERVATION**

## **RAIN WATER HARVESTING FACILITY**



Rainwater Storage tanks - Rainwater from rooftop of different buildings in campus are collected in these tanks for further use



A rainwater tank is functional at the hostel with a capacity of 10000 litres. Collected water is used for domestic purposes in the hostel.

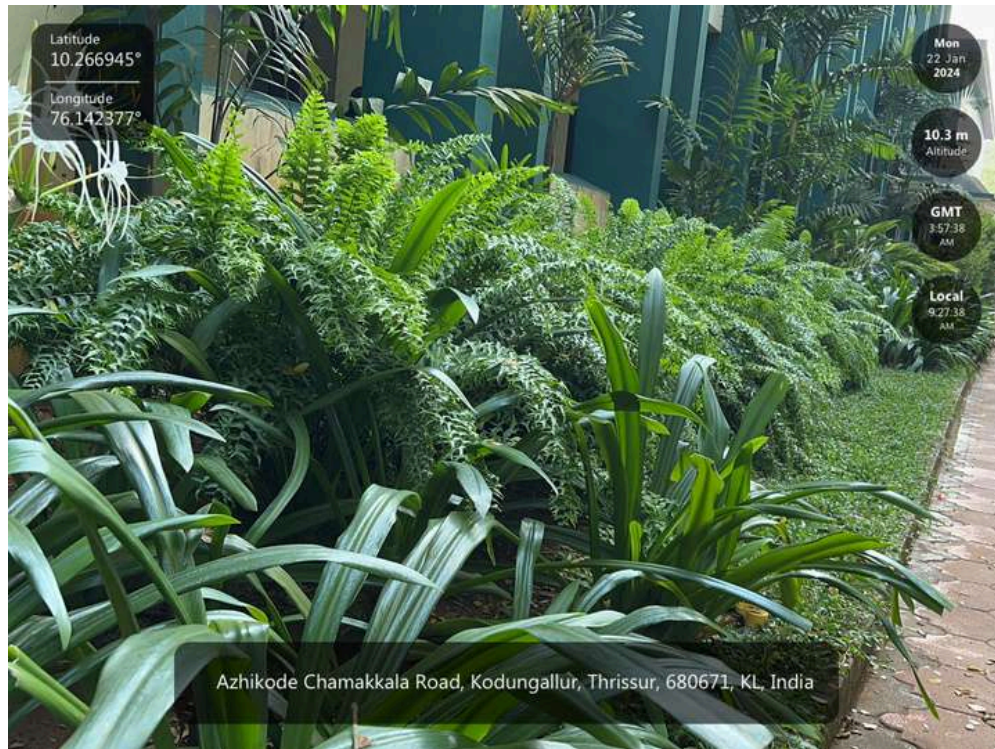
The plants and trees are watered by using this facility.

It is also used for laboratory purposes, irrigational needs of the college and flushing toilets.

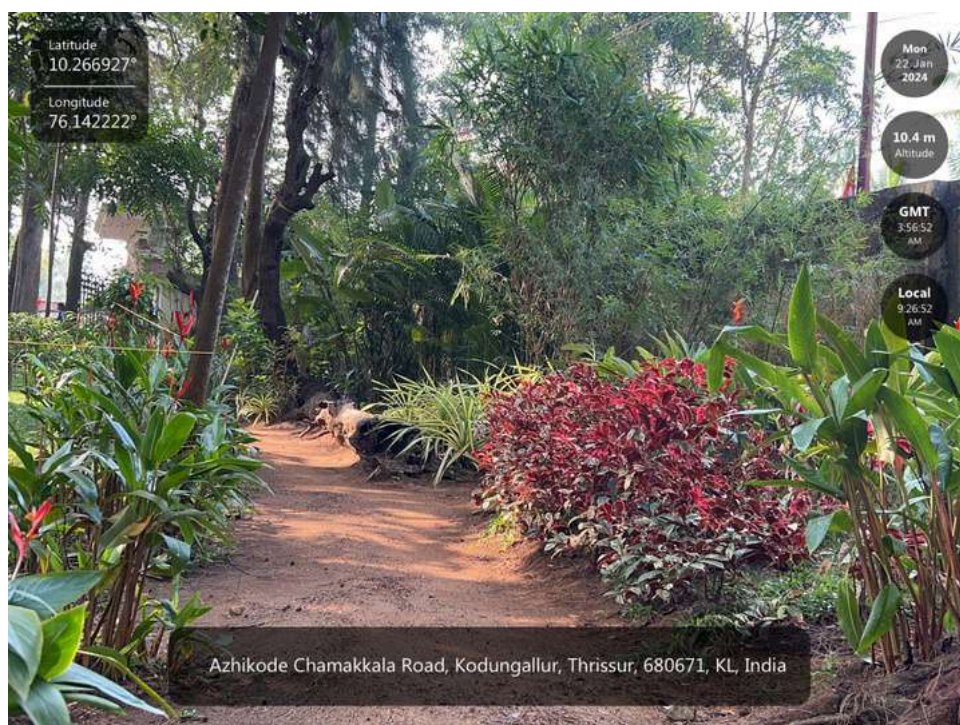
# GREEN CAMPUS

Green spaces and eco-friendly landscaping contribute to the overall aesthetics of a green campus while promoting biodiversity and a healthier environment. Educational initiatives on sustainability and environmental conservation are often integrated into the curriculum, empowering students with the knowledge and skills to become environmentally conscious leaders in their communities.

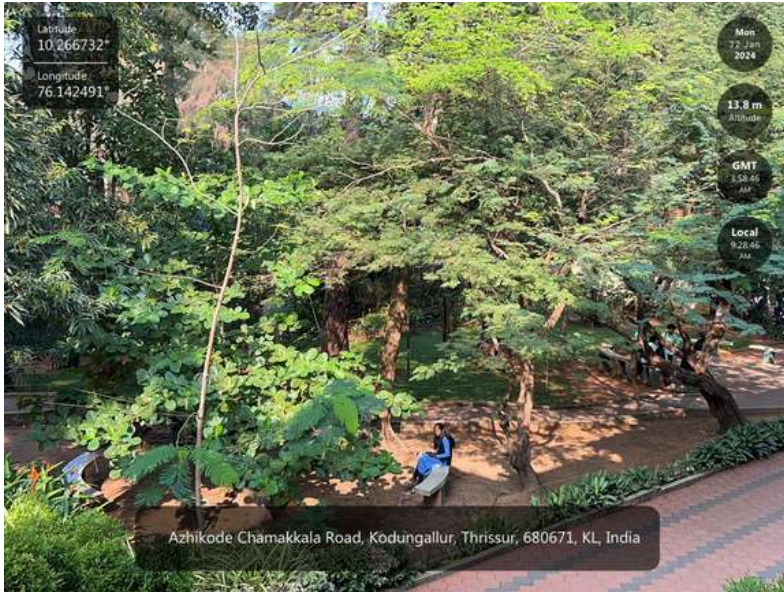
## GARDEN



Green- Well Maintained Garden Near the Main Building



Garden Maintained in the Front Yard of the Campus



Green landscaping with Trees and other Plants near the Main Entrance

# BARRIER-FREE DISABLE FRIENDLY FACILITIES

## RETIRING ROOM FOR DIFFERENTLY ABLED



Retiring room for Differently Abled adjacent to the Main Building

## WASH ROOMS FOR DIFFERENTLY ABLED



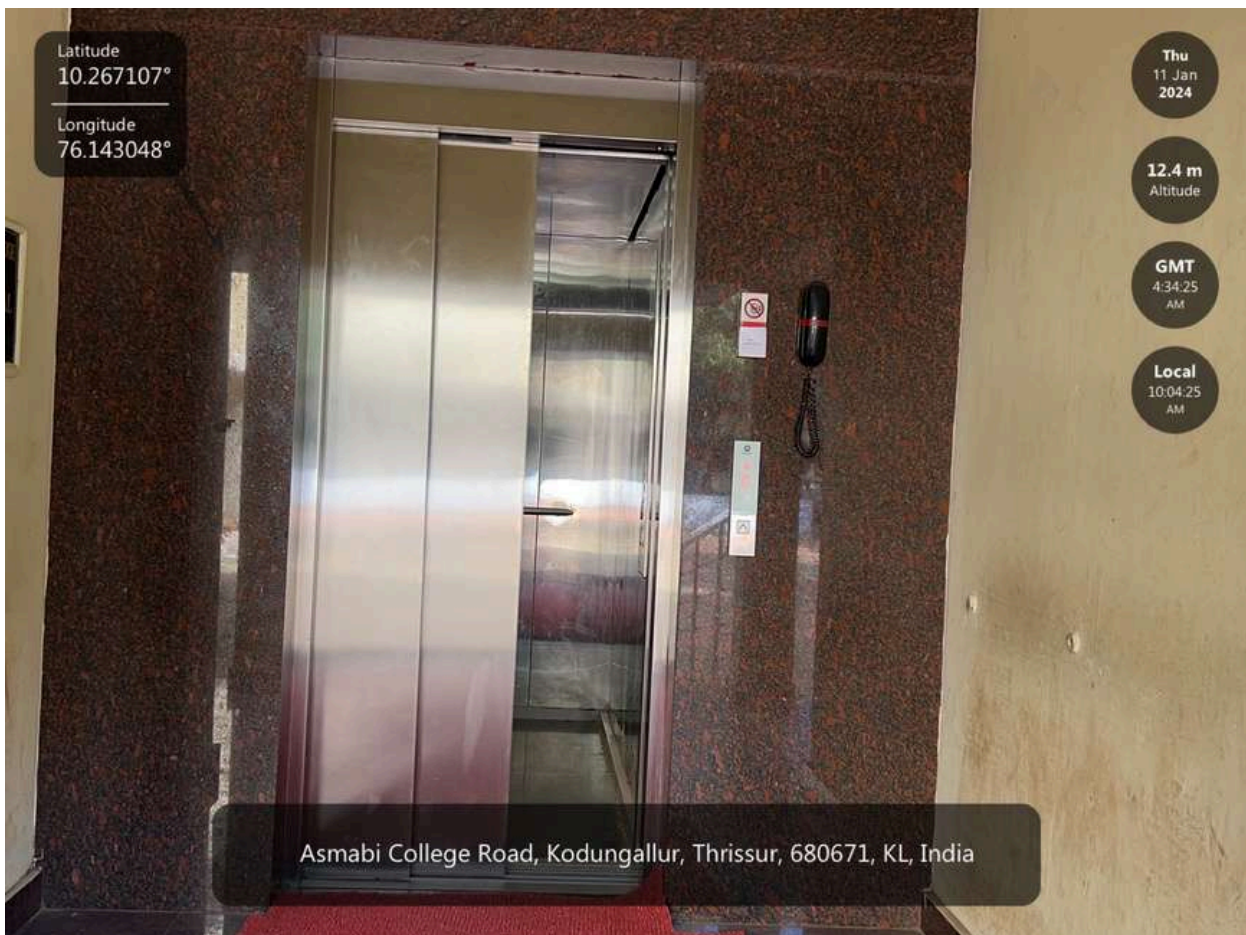
Washroom for Differently Abled in the Main block



Washroom for differently Abled in the New Building

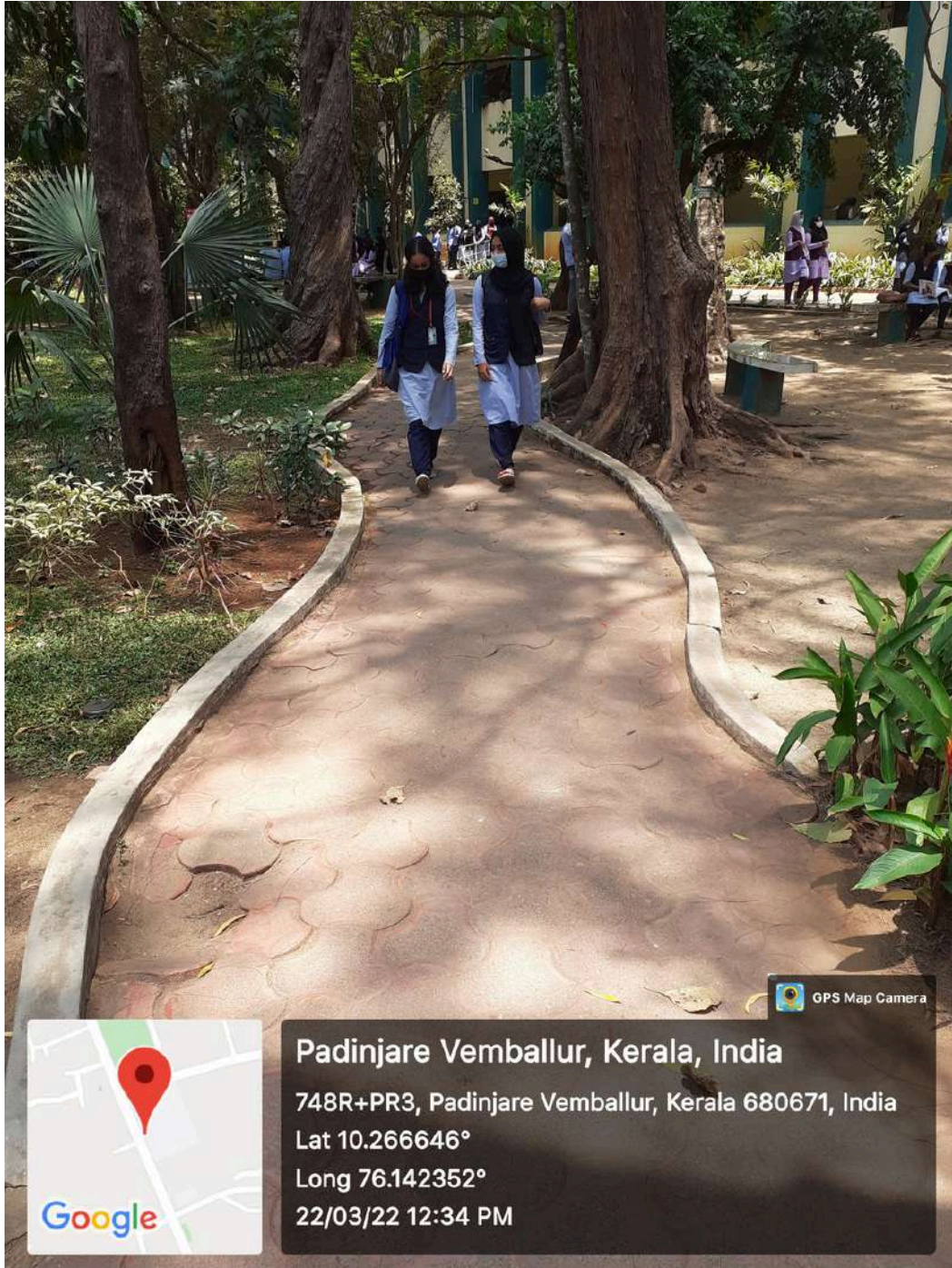
## LIFT FACILITY

The lift facility of the institution helps divyanjan to navigate within the campus with ease.



Lift facility operational in the three storeyed commerce block. The lift provides easy access to examination floor situated in the third floor.

# PEDESTRIAN FRIENDLY PATHWAYS



Pedestrian friendly pathways near the main entrance ensures a barrier free environment for differently abled

# WHEEL CHAIRS



The institution offers wheel chair facility for differently abled students. The facility ensures an inclusive barrier free environment in the campus.



# SKYWALK THAT CONNECTS THE MAIN BUILDING WITH COMMERCE BLOCK



The sky walk facility helps differently abled students of the institution to access the main building of the institution with ease.

# RAMPS



Ramp facility in the commerce block

Ramp Facility in the Main Building



# RAMP FACILITY IN ALUMNI SQUARE



Ramp facility in the alumni square - Open air auditorium

## **SCREEN-READING SOFTWARE (NON-VISUAL DESKTOP ACCESS -NVDA)**

Facilities for persons with disabilities (Divyangjan) accessible website, screen-reading software (Non-Visual Desktop Access -NVDA) in the college library. Storyteller app links are provided to students through the library website.



STUDENTS ACCESSING  
LEARNING MATERIAL  
THROUGH THE SOFTWARE

## **AUDIO BOOKS FACILITY IN LIBRARY**

[CLICK HERE FOR THE LINK](#)