



MES ASMAABI COLLEGE

CRITERIA 4

INFRASTRUCTURE AND LEARNING RESOURCES

K E Y I N D I C A T O R 4 . 1



PHYSICAL FACILITIES

4.1.1 The Institution has adequate infrastructure and other facilities for

A. teaching – learning, viz., classrooms, laboratories, computing equipment etc

B. ICT – enabled facilities such as smart class, LMS etc.

Facilities for Cultural and sports activities, yoga centre, games (indoor and outdoor), Gymnasium, auditorium etc



BUILDING DETAILS

9 LABORATORY FACILITIES

MAIN BLOCK

GROUND FLOOR

Sl no.	Room no:	Laboratory
1	MG07	CHEMISTRY & BIOCHEMISTRY

ROOM NO MG07

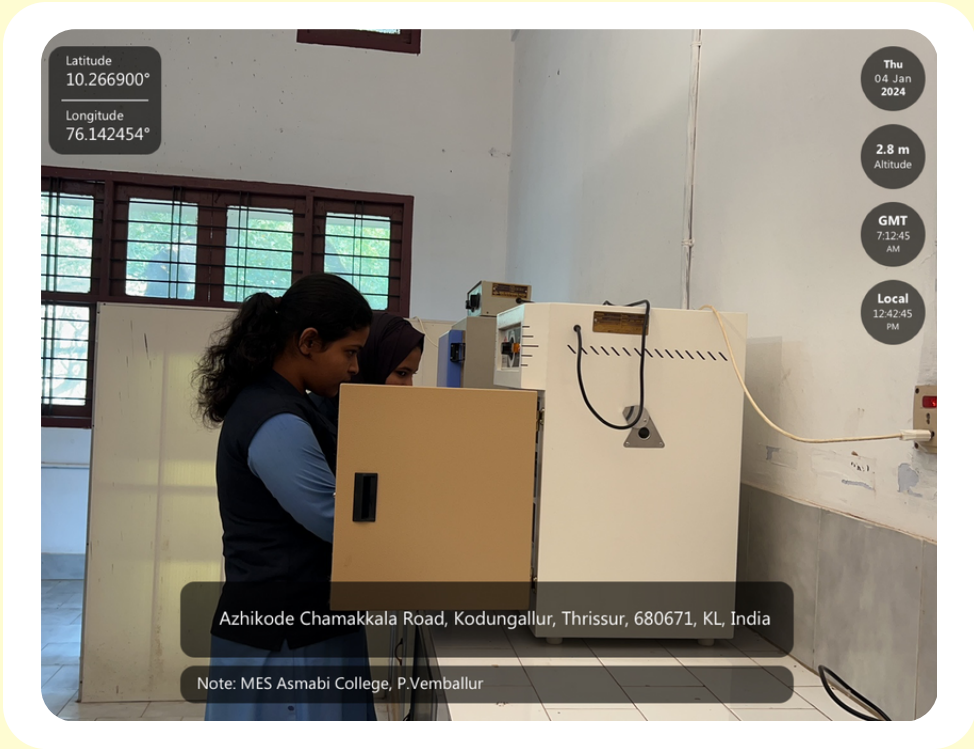
CHEMISTRY & BIOCHEMISTRY





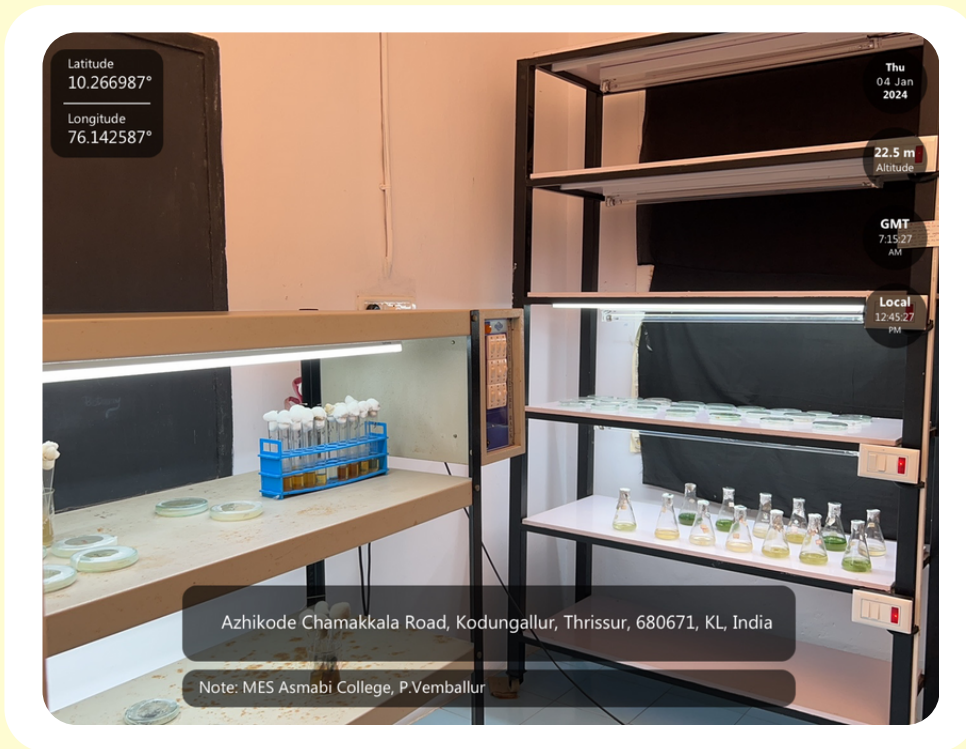
Sl. no.	Room no.	LABORATORY
1	MF01	BOTANY INSTRUMENTATION ROOM
2	MF02	BOTANY TISSUE CULTURE LAB
3	MF03	BOTANY TAXONOMY AND ECOLOGY RESEARCH LAB
4	MF06	BOTANY UG/ PG LAB
5	MF13	PHYSIOLOGY AND PHYTOCHEMISTRY RESEARCH LAB

ROOM NO MF01
BOTANY INSTRUMENTATION ROOM



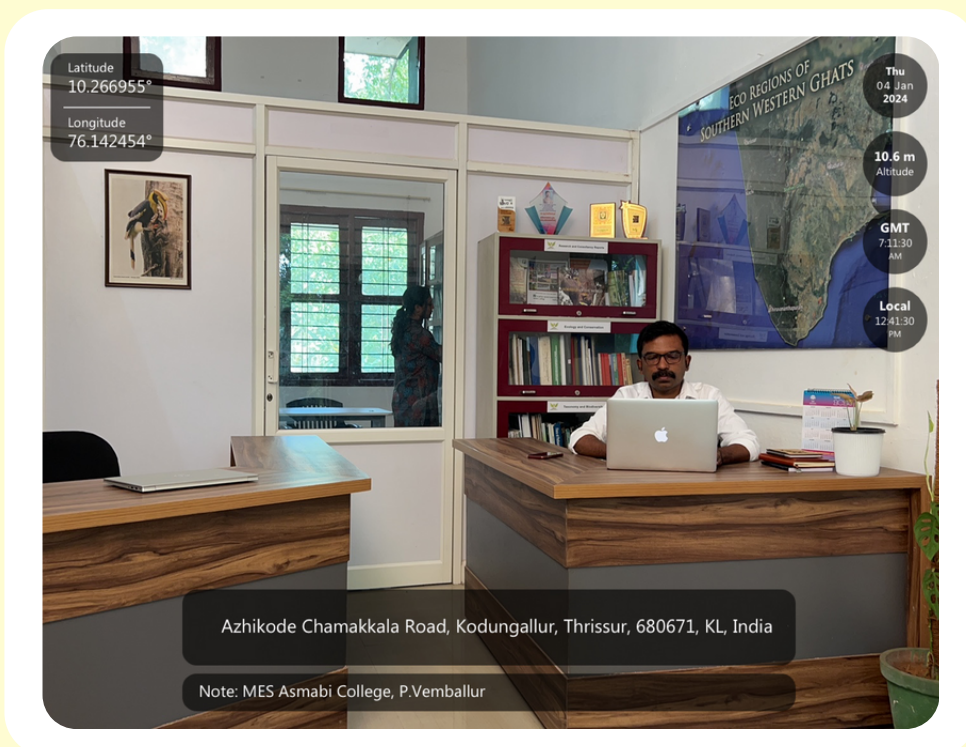
ROOM NO MF02

BOTANY TISSUE CULTURE ROOM



ROOM NO MF03

BOTANY TAXONOMY AND ECOLOGY RESEARCH LAB



ROOM NO MF06

BOTANY UG / PG LAB



ROOM NO MF13

**PHYSIOLOGY AND PHYTOCHEMISTRY
RESEARCH LAB**



COMMERCE BLOCK

GROUND FLOOR

Sl.no	Room no.	Laboratory
1	CG12	MODERN PHYSICS LAB
2	CG13	PHYSICS-DARK ROOM
3	CG14	UG PHYSICS LAB

ROOM NO CG12

MODERN PHYSICS LAB



ROOM NO CG13

PHYSICS-DARK ROOM



ROOM NO CG14
UG PHYSICS LAB



COMMERCE BLOCK

FIRST FLOOR

Sl. no.	Room no.	LABORATORY
1	CF10	PHYSICS- ELECTRONICS LAB

ROOM NO CF10
PHYSICS-ELECTONICS LAB



COMMERCE BLOCK

SECOND FLOOR

Sl. no.	Room no.	LABORATORY
1	CS06	DFP+ MASS COMMUNICATION MEDIA LAB
2	CS13	BCA-COMPUTER LAB 1
3	CS12	BCA-COMPUTER LAB 2

ROOM NO CS06
DFP+MASS COMMUNICATION
MEDIA LAB



ROOM NO CS13
BCA-COMPUTER LAB 1



ROOM NO CS12

BCA-COMPUTER LAB 2



AQUACULTURE BLOCK

GROUND FLOOR

Sl. no.	Room no.	LABORATORY
1	QG01	ZOOLOGY LAB
2	QG04	AQUACULTURE-MICROBIOLOGY AND HYDROCHEMISTRY LAB

ROOM NO QG01

ZOOLOGY LAB



ROOM NO QG04

AQUACULTURE-MICROBIOLOGY AND HYDROCHEMISTRY LAB



AQUACULTURE BLOCK

FIRST FLOOR

Sl. no.	Room no.	LABORATORY
1	QF01	AQUACULTURE LAB 1
2	QF02	-6- AQUACULTURE LAB 2

ROOM NO QF01
AQUACULTURE LAB 1



ROOM NO QF02
AQUACULTURE LAB 2

